

SINGAPORE

www.homeanddecor.com.sg

Home & DECOR

SINGAPORE'S
NO.1
INTERIOR
DESIGN
MAGAZINE
NIELSEN MEDIA INDEX 2008

STYLISH LIVING MADE EASY

HOME.DECOR
FAIR
2009
IS BACK!
OCT 2-4
PAGE 171

38
PAGES OF
LIVING
COLOUR

**MAKE OVER
YOUR BATHROOM**
CRAFTY WAYS TO A CHIC SANCTUARY

* HOT HUES OF 2010
* VIBRANT SHADES,
GORGEOUS SPACES

**HOME OF
THE FUTURE**
LET YOUR FRIDGE
DO THE SHOPPING...

OCT 2009

S\$5.00 RM\$9.00
ISSN 1599-064X (2010 0302538)



8 888737 325229

text CHIQUIT TORRENTE
photography ALAN LEE/
MEKONG PICTURES
art direction CARRIE TAN

RETRO SHADES

BOLD BLOCKS OF COLOUR TURN A SMALL APARTMENT INTO AN AMERICAN-STYLE DINER WITH VICTORIAN GOTHIC TOUCHES.

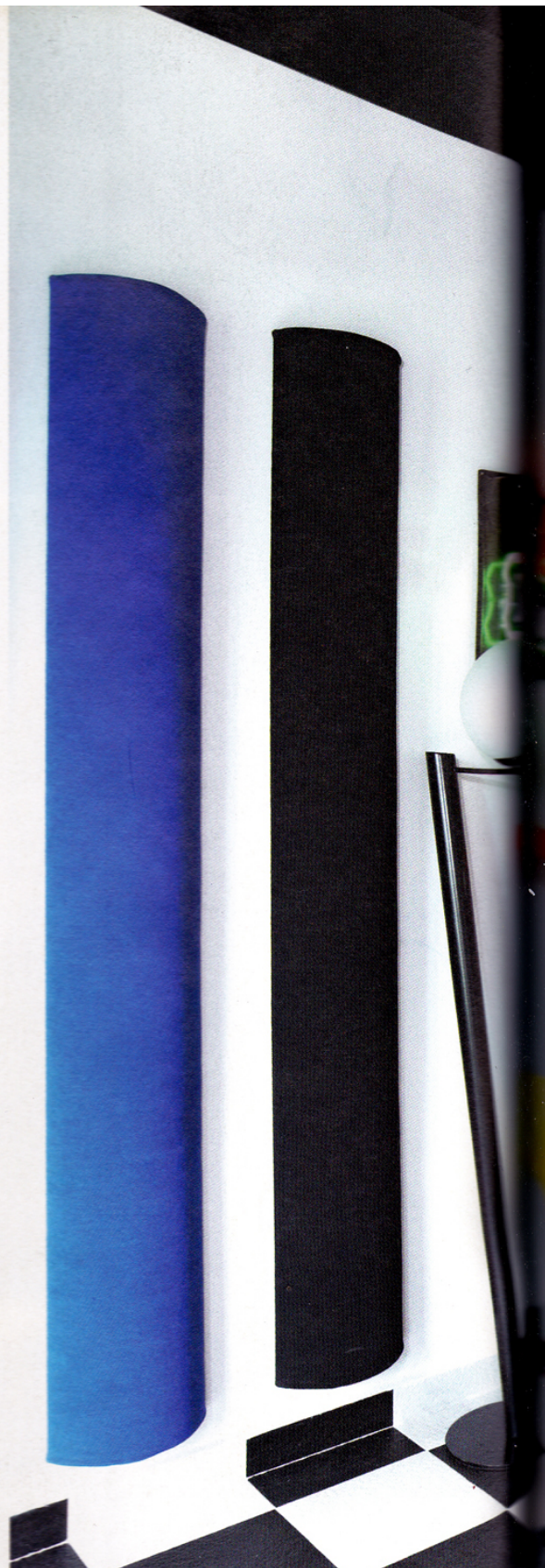
Newlyweds Joshua Koh and Pearly Cheong have quirky interests. He likes retro knick-knacks like neon signs and is currently looking for a 1950s-style jukebox. She collects limited-edition Barbie dolls and actually takes them out of their boxes to fully admire the couture they are dressed in.

It's no surprise that their 1,185sqf home is just as unusual. To marry their diverse styles and collections, the couple engaged interior designer Romie Lee of The Cottage Crafts. Romie used a palette of cheerful crayon hues and designed unique interior details and finishes like spray-painted glass cladding and sliding doors with glass portholes.

COLOURS OF THE 1950s

Apple green spray-painted glass shoe cabinets at the entryway ensure that the black-and-white chequerboard-patterned floors don't feel overpowering. Instead of a skirting, waist-height >

Fabric sound panels in red, blue and black liven up the white wall in the diner-style living and dining room. "They also serve as backrests for guests who sit on the floor," Joshua jokes.




The pink and blue display cabinets flank the entrance to the living and dining area. *below left* This pay phone is one of Joshua's vintage finds.



COLOUR
play

[HUES THAT POP
THE BLACK-AND-WHITE
FLOOR MAKES THE VIBRANT
TONES OF THE BUILT-IN
FURNITURE STAND OUT.





apple green spray-painted glass panels line the hallway so Joshua and Pearly's three dogs can have the run of the space without scratching the walls. They chose the cheerful shade to help brighten up this windowless area.

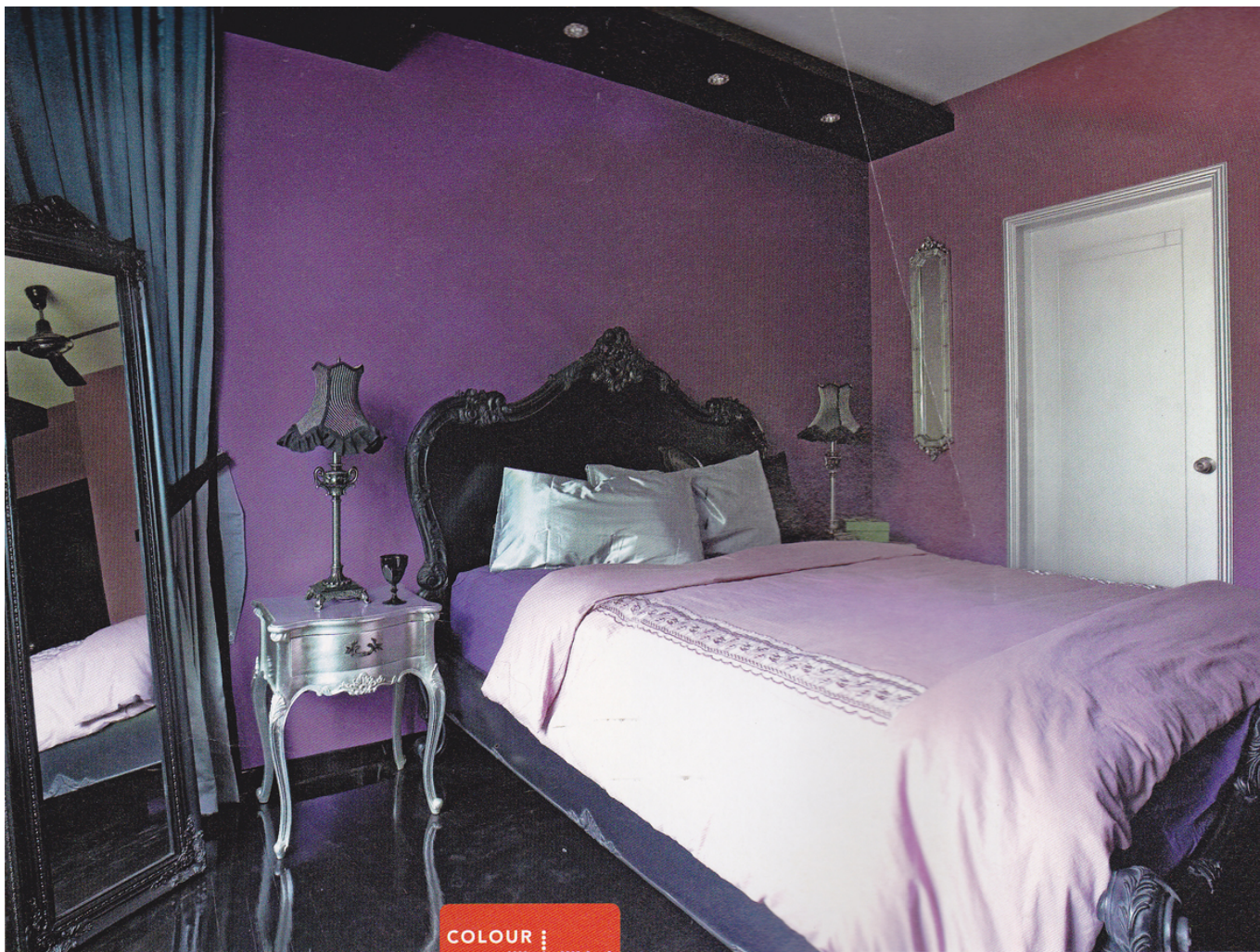
Adding to the colour palette are pink and blue 1950s cabinets with rounded corners, whose hues complement the sweet look of Pearly's Precious Moments collection displayed in them.

A pair of black and white doors with glass porthole windows close off the 1950s American-diner-inspired living and dining room from the hallway. There's a wacky reason behind Joshua and Pearly's choice of yellow bar stools and a bar counter for their dining table. "We wanted something higher so the dogs couldn't rest their heads on the table and beg for food," Pearly laughs. A Heineken neon sign completes the restaurant-bar look of the space.

VICTORIAN HUES

With three bedrooms, the couple could turn one into a study and another into Pearly's piece de resistance – the Barbie room. She wanted a room inspired by American designer Anna Sui and >

Inside Pearly's Barbie room is a mix of black Rococo-style furniture with metallic-coloured outlines. opposite Romie designed built-in cabinets with a black lacquered finish to display the dolls.



COLOUR
play

below Flocked Rococo-print panels on the glossy closet doors contribute to the rich, tactile look of the master bedroom.

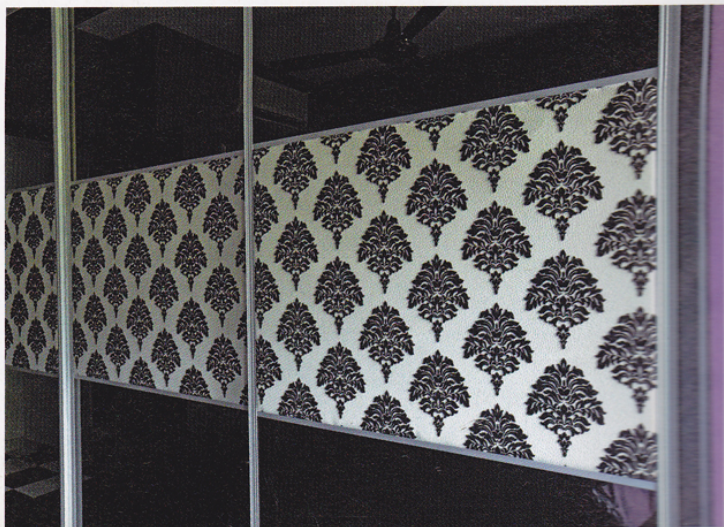
[ALL GLAMMED UP
SHIMMERY SILVER PILLOWS
AND BLACK-OUT DRAPES
ADD TO THE SEDUCTIVE
AMBIENCE OF THE PURPLE-
THEMED BEDROOM.

lingerie brand Victoria's Secret, with late-19th-century Victorian Gothic details in black and soft pink. The colour scheme, Pearly explains, is a vamped-up take on the trademark Barbie pink.

The master bedroom is also a Victorian Gothic-inspired space, but in black and purple. Closet doors with flocked Rococo-print panels add pattern and texture to the purple walls.

"We're really not into the contemporary style," Joshua shares. Pearly affirms that they're enamoured of the past, and it clearly shows in their vintage-retro home. "It took us two years to find a designer who would work with the ideas we have, and Romie did way beyond what we imagined," she adds. The result is so far-removed from the standard-issue condominium finishes that coming home for Joshua and Pearly is like stepping into a different, technicoloured time. ●

where to go
THE COTTAGE CRAFTS TEL: 6336-7588





COLOUR PALETTE

Shots of primary hues on a black-and-white base

MOOD ✦ STYLE

American diner with a touch of Victorian Gothic

HOME

Three-bedroom condominium apartment in Tanjong Rhu